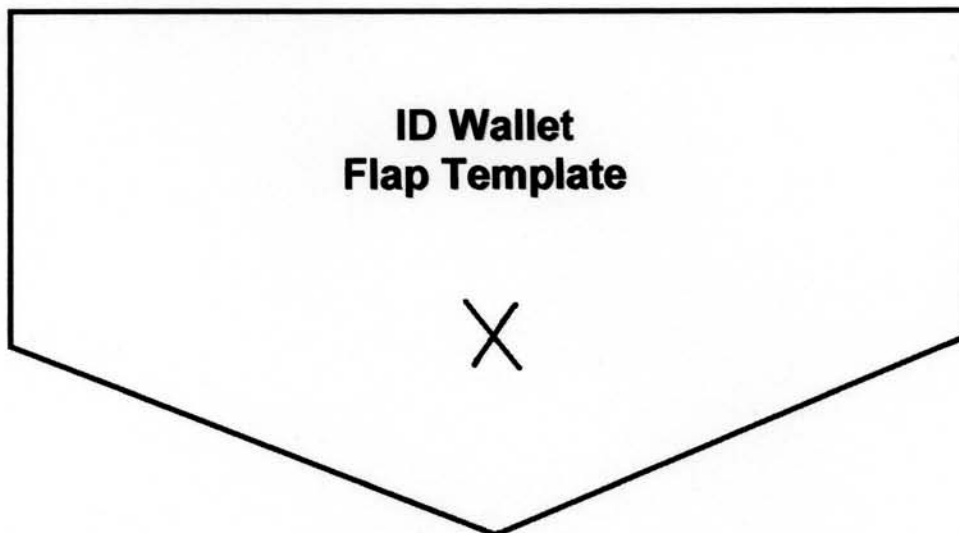
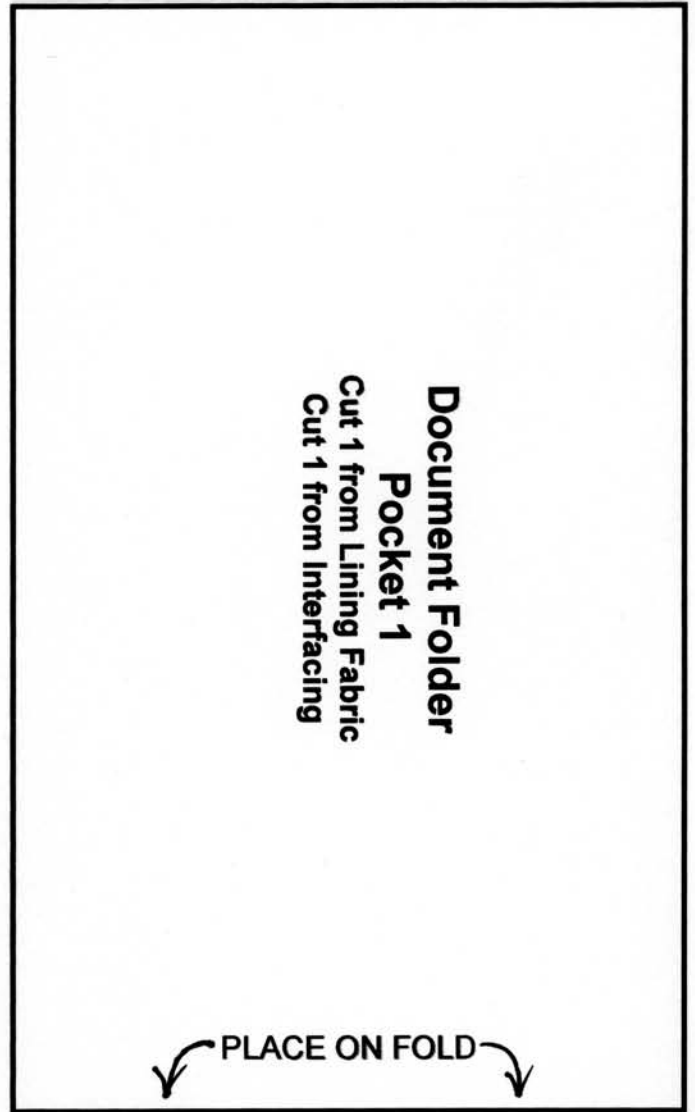
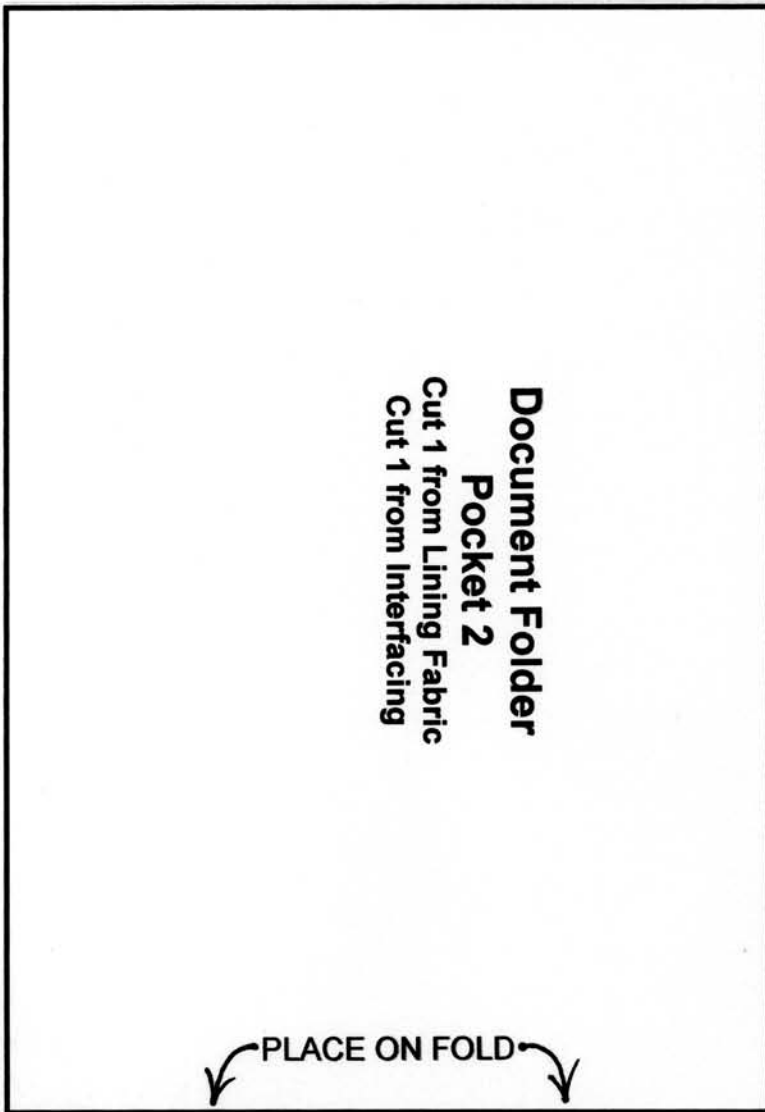
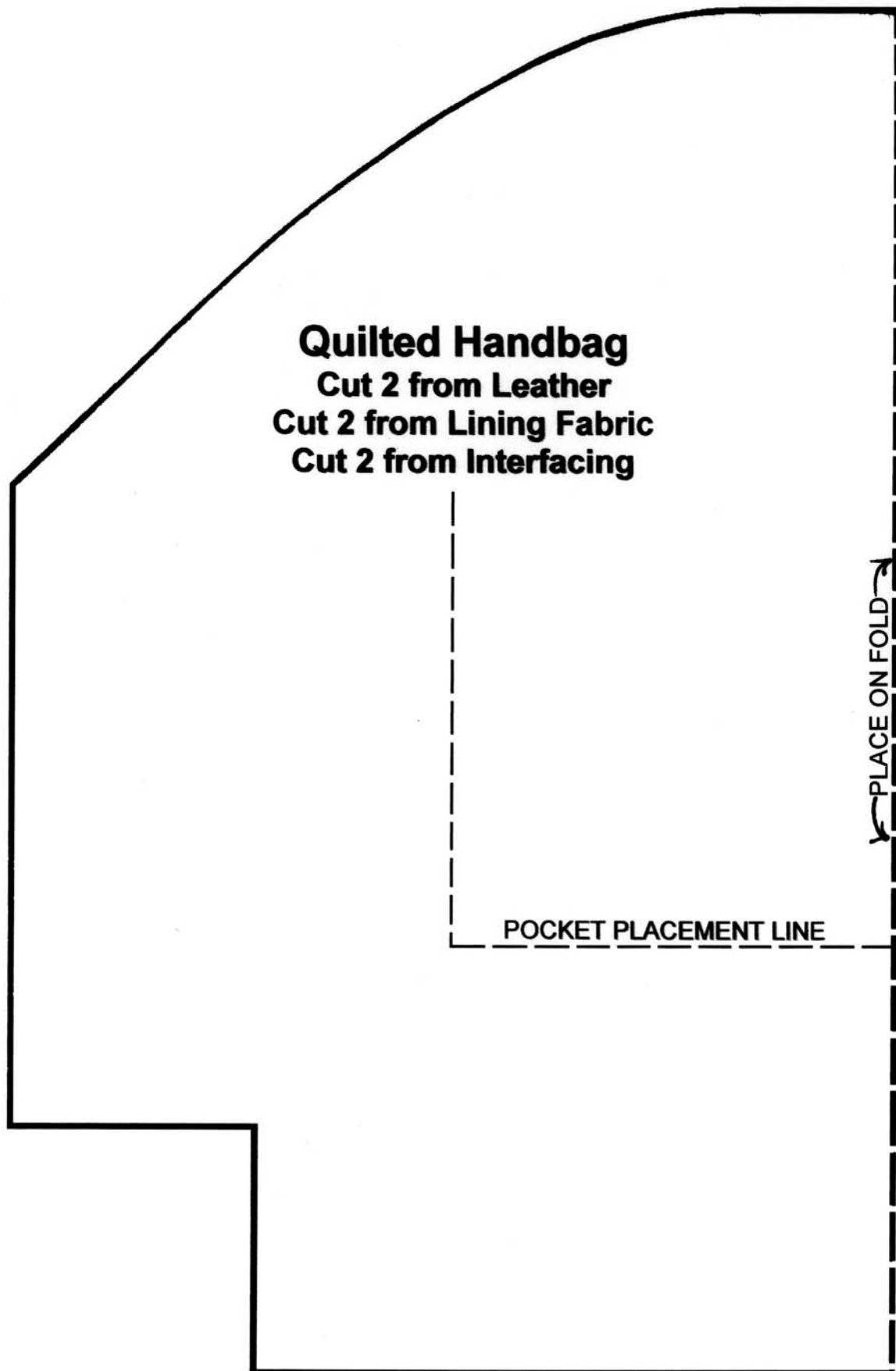


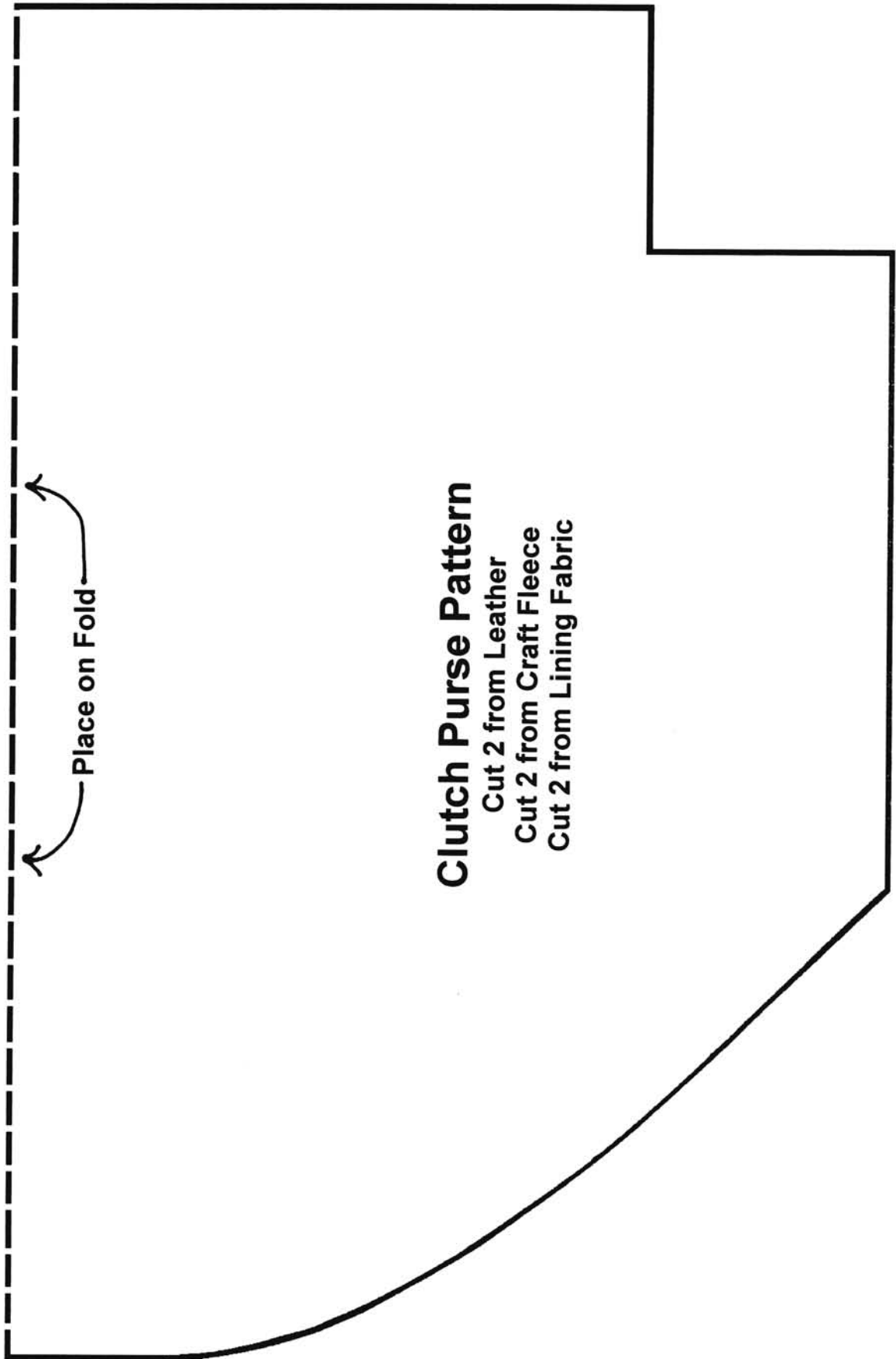
Document Folder Pockets — ID Wallet Flap



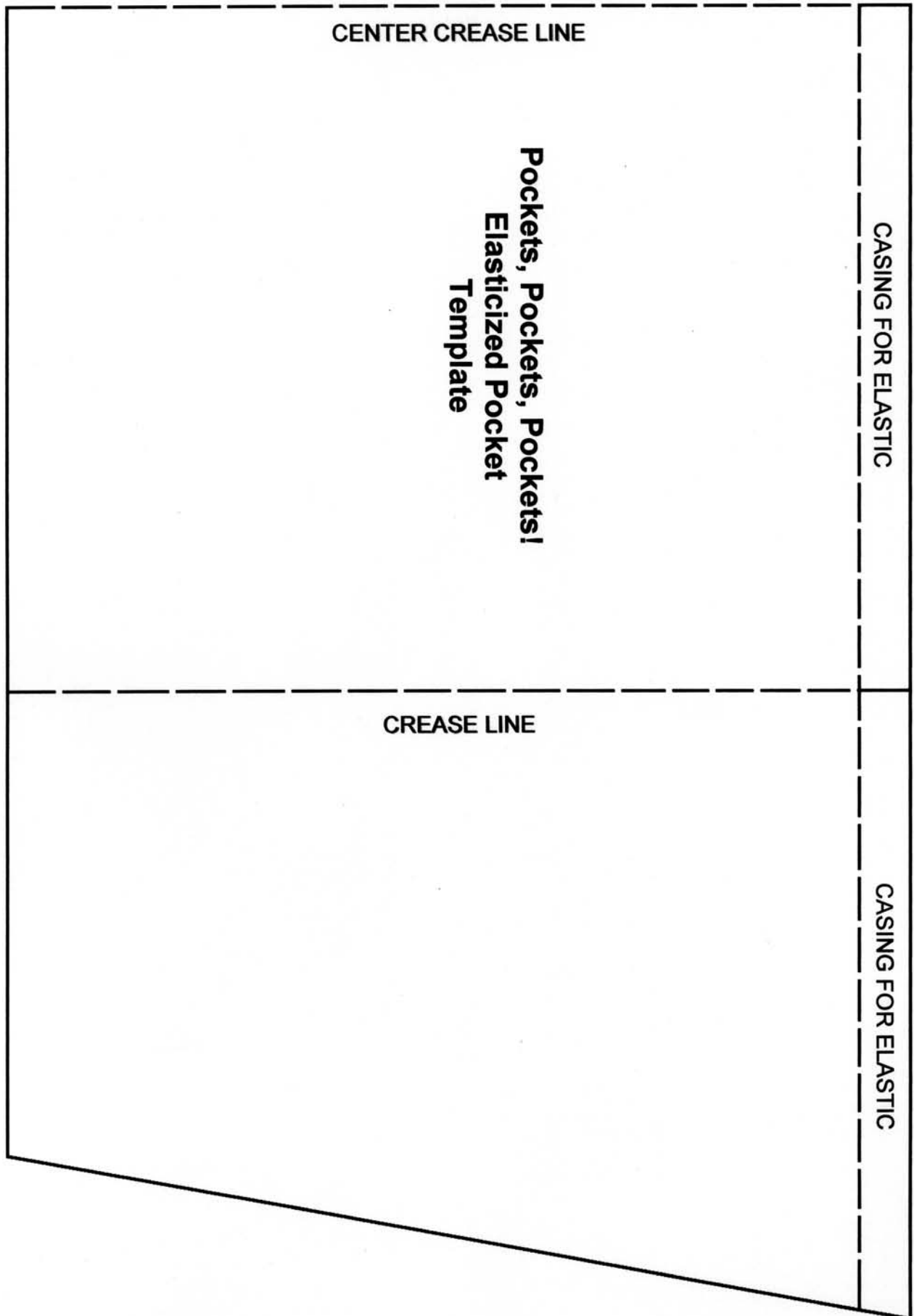
Quilted Handbag



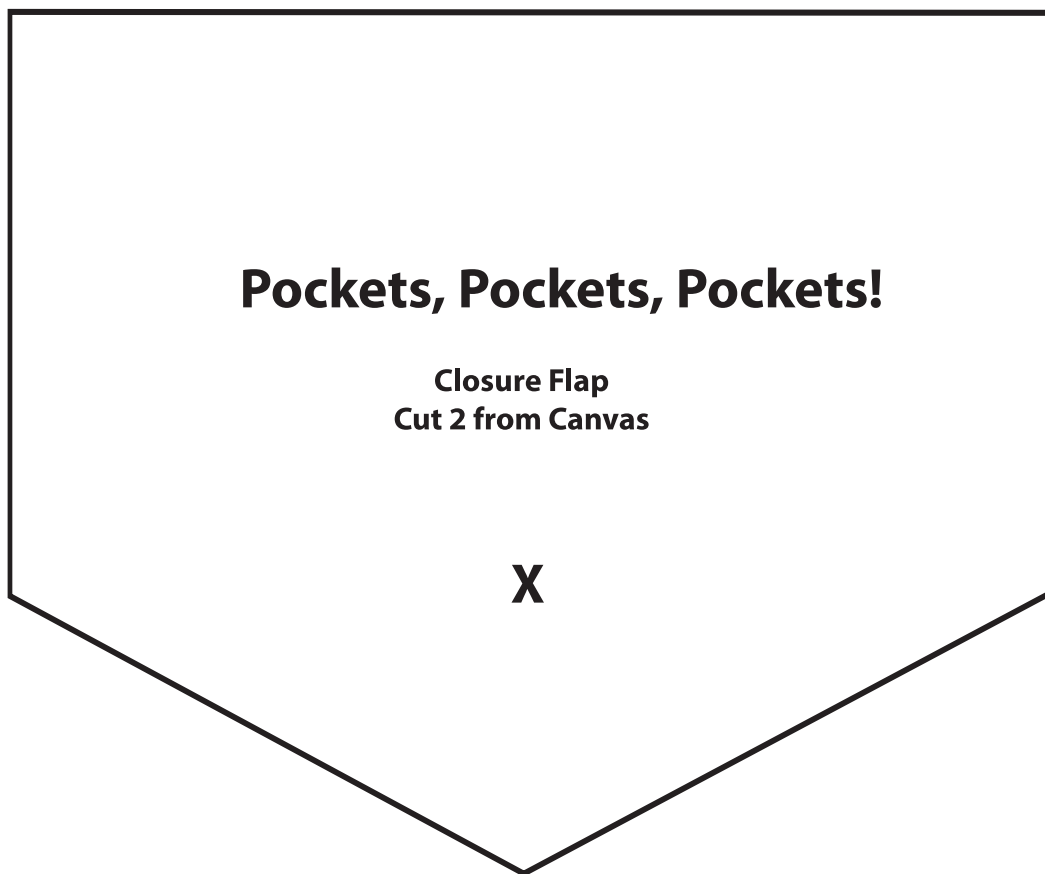
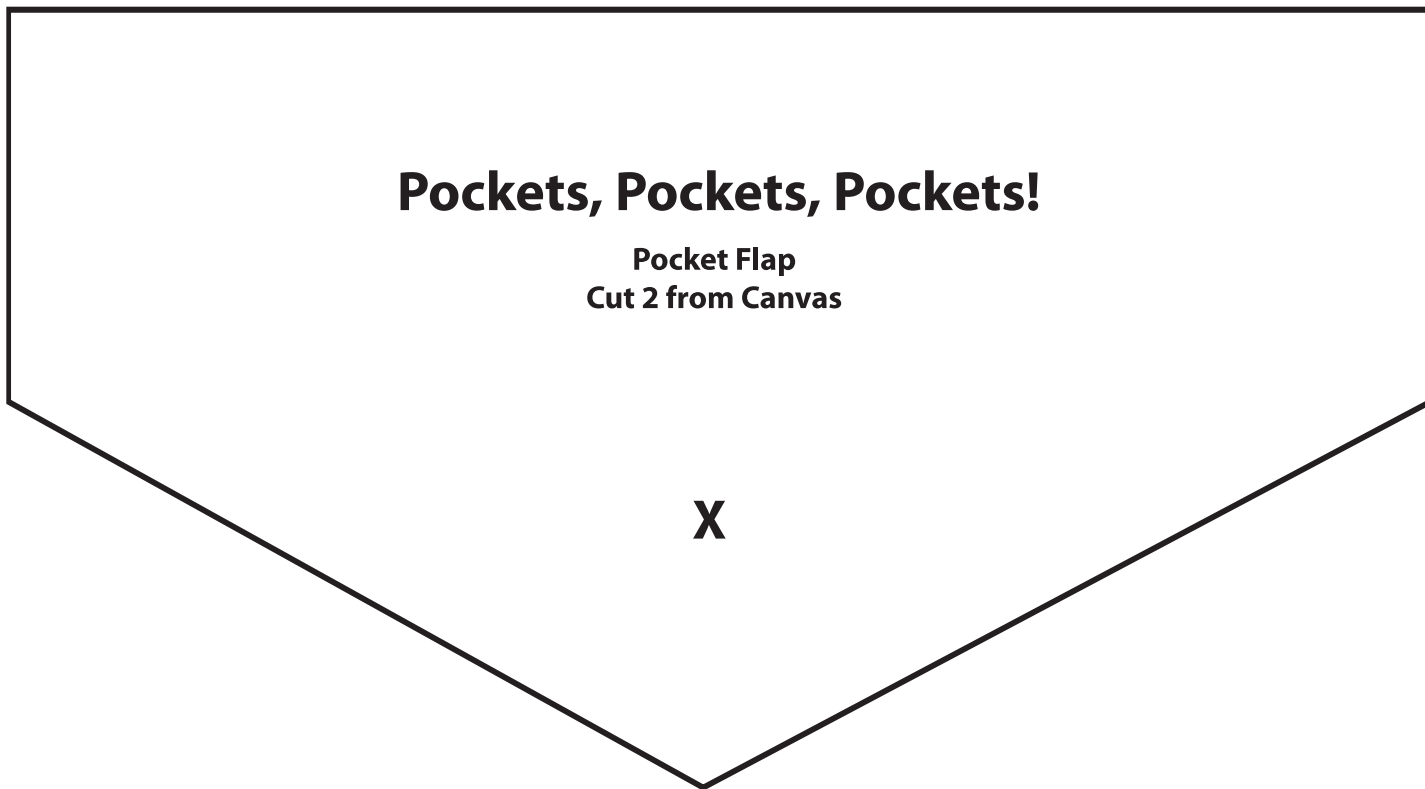
Leather Clutch Purse



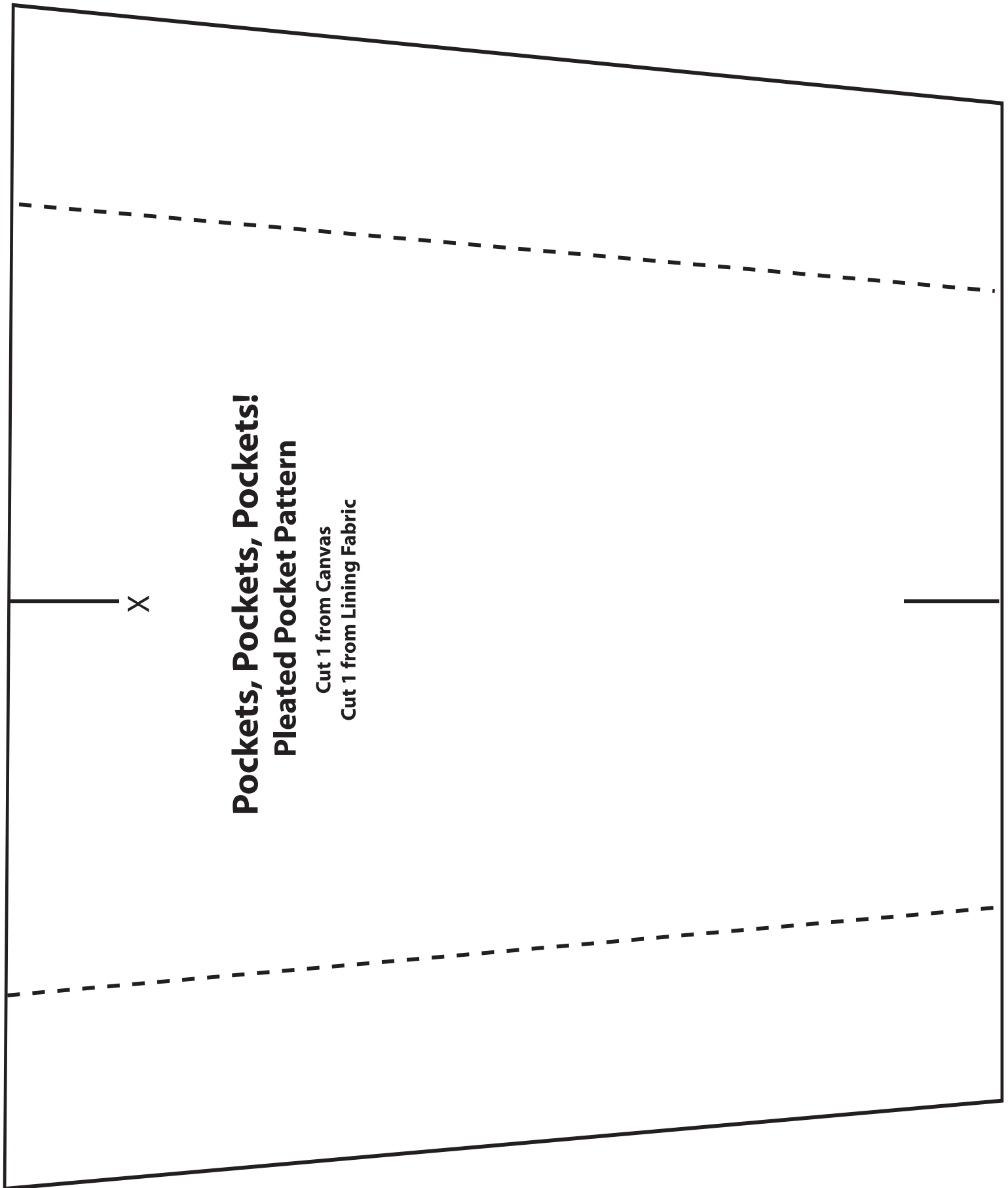
Elasticized Pockets - Canvas Tote



Pocket Flaps - Canvas Tote



Canvas Tote



Pockets, Pockets, Pockets!
Pleated Pocket Pattern

Cut 1 from Canvas
Cut 1 from Lining Fabric

X